

# clever



## 6 Queen Anne Terrace

, Plymouth, PL4 8EG

**£125 Per week**



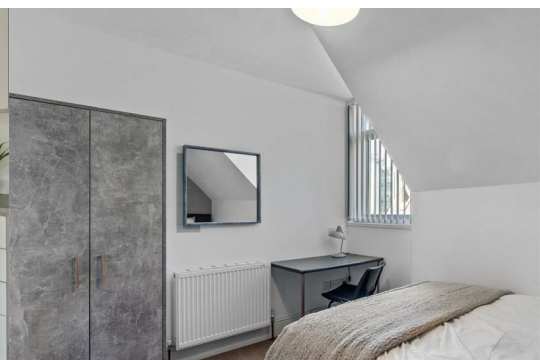
Rooms available now and whole house available from 1st September 2026.

13 bedroom student house with roof terrace., rooms range from £125-£131 per week inc bills!

Got lots of friends and want to live together in a large house share? 6 Queen Anne Terrace could be the perfect choice, offering 13 bedrooms to choose from.

This house consists of 1 huge kitchen/diner on the ground floor and another bright and modern kitchen on the 1st floor, providing plenty of fridge and storage space. There are two living rooms, 7 WC's and 4 shower rooms, as well as a sunny roof terrace!

Not a group of 13? We're offering this house to individuals or smaller groups this September. So, please get in touch! A great opportunity to meet new people AND live just a stone's throw from University next year.



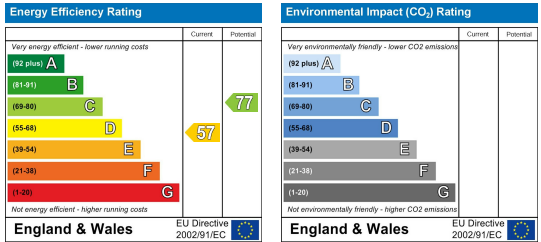
## Area Map



## Floor Plans



## Energy Efficiency Graph



These particulars, whilst believed to be accurate are set out as a general outline only for guidance and do not constitute any part of an offer or contract. Intending purchasers should not rely on them as statements of representation of fact, but must satisfy themselves by inspection or otherwise as to their accuracy. No person in this firm's employment has the authority to make or give any representation or warranty in respect of the property.